

MUNICIPAL DISTRICT OF BIGHORN No. 8

POLICY

Name: WINTER ROAD MAINTENANCE POLICY **Number:** T-19
Page: 1 of 4

PURPOSE AND INTENT

To establish service levels for a safe, cost effective and accountable Winter Road Maintenance program for MD Controlled Roads within an MD road allowance or registered road plan.

Without Council's authorization, the Municipality will not provide Winter Road Maintenance service on any:

- a) Back Alley;
- b) Non MD-Controlled road;
- c) Private property; or
- d) Sidewalk.

DEFINITIONS

For the purposes of this Policy, the following definitions shall apply:

"Aggregate Surface" means surfaces with loose aggregates, such as gravel, dry asphalt millings and light oil treatments.

"Director of Operations" means the Director of Operations, or designate.

"Ice-Control" means the use of abrasive materials and salts or chemicals to improve traction on ice or packed snow.

"MD Controlled Road" means a road developed to a municipal standard, accepted by the Director as a municipal road, and controlled/maintained by the Municipality as set forth in the in the Roads Development Policy T-16.

"Non-MD Controlled Road" means any Rural Residential Access Road as set forth in the Roads Development Policy T-16, LOC road, or private driveway.

"Snow Clearing" means plowing, pushing or blading snow into a ditch, snow pile or windrow to provide passable driving lanes.

"Snow Removal" means the removal and disposal of a snow pile or windrow to a designated snow storage facility.

"Roadside Control" means the installation of snow fencing, or the removal of roadside trees and brush to control snow drifting and icing.

“Winter Road Maintenance” means any Snow Clearing, Ice-Control, Snow Removal, or Roadside Control activity defined in this Policy.

DEFINITIONS

A. GENERAL:

1. The Director of Operations has the authority to temporarily reduce or suspend Winter Road Maintenance service due to extreme weather conditions, or the lack of available resources and/or funding.

B. SNOW CLEARING:

1. The Municipality will endeavor to meet the following service levels for Snow Clearing as established by Council in the Snow and Ice Control Map for average snowfalls upon being observed and or being reported:
 - Priority 1: Major hamlet and rural roads, Yamnuska Drive and Exshaw Senior Parking within 8 hours after an accumulation of 1 inch.
 - Priority 2: Minor hamlet roads within 24 hours after an accumulation of 2 inches.
 - Priority 3: Minor rural roads within 24 hours after an accumulation of 3 inches.
 - Priority 4: Within 48 hours after an accumulation of 3 inches.
 - Priority 5: As deemed necessary by the Director.
2. At the request of the school authority, the MD may consider school bus routes as Priority 1 roads. It is ultimately each school authority’s responsibility to provide the Municipality with updated school bus routes, and each school bus driver’s responsibility to determine if a road is safe for travel.
3. Except for at controlled intersections, steep hills, sharp curves or when icing develops, aggregate surfaces will typically not be cleared to their bare surface to minimize aggregate loss.
4. When windrowing snow along roadways, the operator shall be conscientious of driveways and approaches, and shall limit the amount of snow that is left behind. The MD shall not be responsible for clearing residual snow left across driveways and approaches.
5. Windrows left along the shoulder on rural roads will only be winged back into the ditch once the driving lane starts to become impeded.
6. Windrows will be cleared from within intersecting MD-Controlled Road intersections and lane (alley) approaches, and the roadway in front of Canada Post and community mailbox stations.

7. To ensure the appropriate use of public tax dollars, Snow Clearing contractors employed by the Municipality are not permitted to clear snow from any Non-MD Controlled Road or private property until after completing their municipal service contract area.

C. ICE CONTROL:

1. Ice-Control will be at the discretion of the Director based on Provincial highway maintenance guidelines and will generally follow the priorities outlined on the Snow and Ice Control Map.
2. Ice Control may be undertaken along an entire roadway or at spot locations upon being observed or reported.

D. SNOW REMOVAL:

1. Snow Removal will be at the discretion of the Director of Operations where a snow pile or windrow:
 - a) Creates an unsafe sightline;
 - b) Prohibits the safe passage of vehicles and/or pedestrians; or
 - c) Creates drainage issues.
2. Snow will only be hauled to and disposed of at the three temporary snow storage sites designated in the Snow and Ice Control Map.
3. The use of these sites will be managed on a three year rotation.
4. Commercial haulers and the general public may at the Discretion of the Director of Operations use a municipal snow storage facility with an approved permit, provided the snow is generated from within the municipality.

E. ROADSIDE CONTROLS:

1. Preventative measures such as the clearing of roadside bush and trees and the installation of snow fencing will be at the discretion of the Director of Operations in problem areas prone to icing and snow drifting.

F. OTHER:

1. Public complaints and enquiries shall be recorded as received and acknowledged within 24 hours of the next working day.

Date Approved: October 14, 2014 **Motion No.:** 223/14

Date Amended: February 12, 2019 **Motion No.:** 24/19

C.A.O.



Reeve



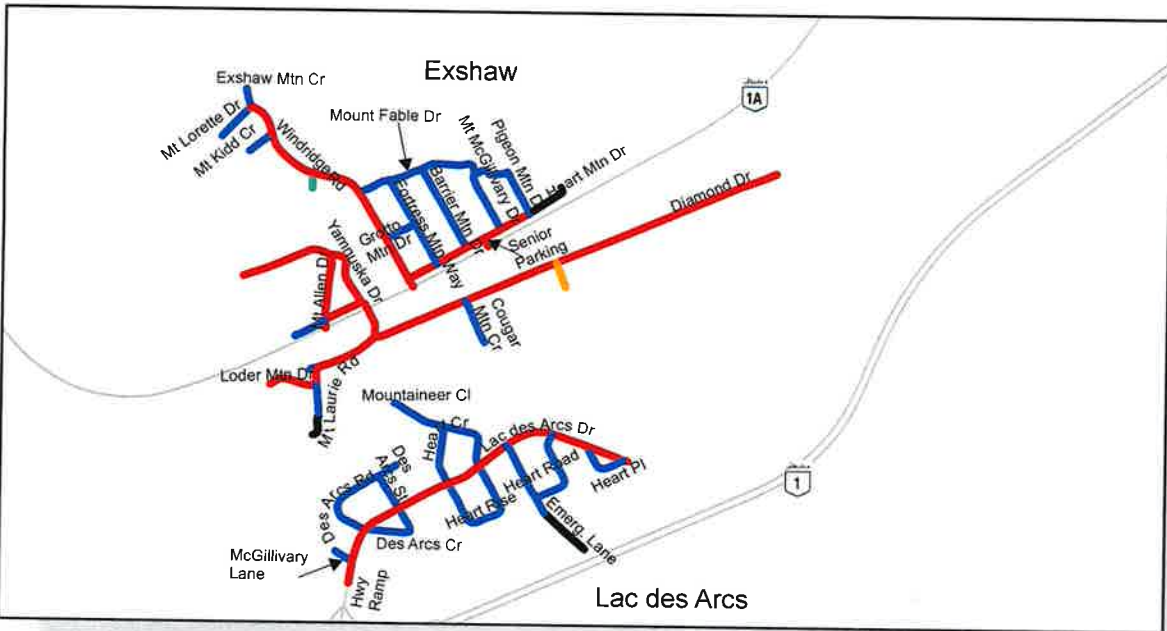
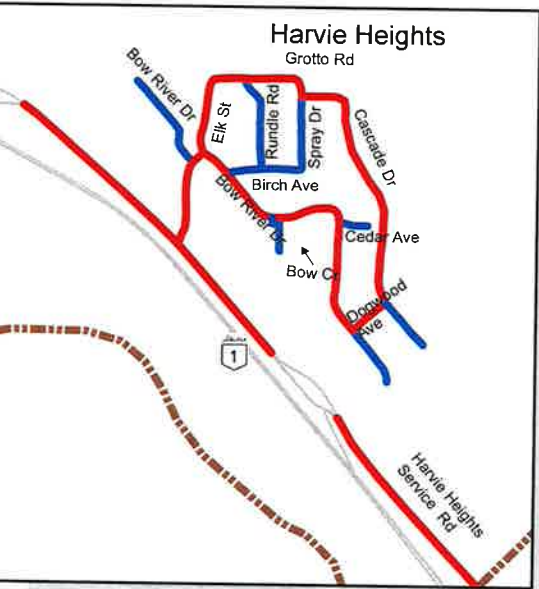
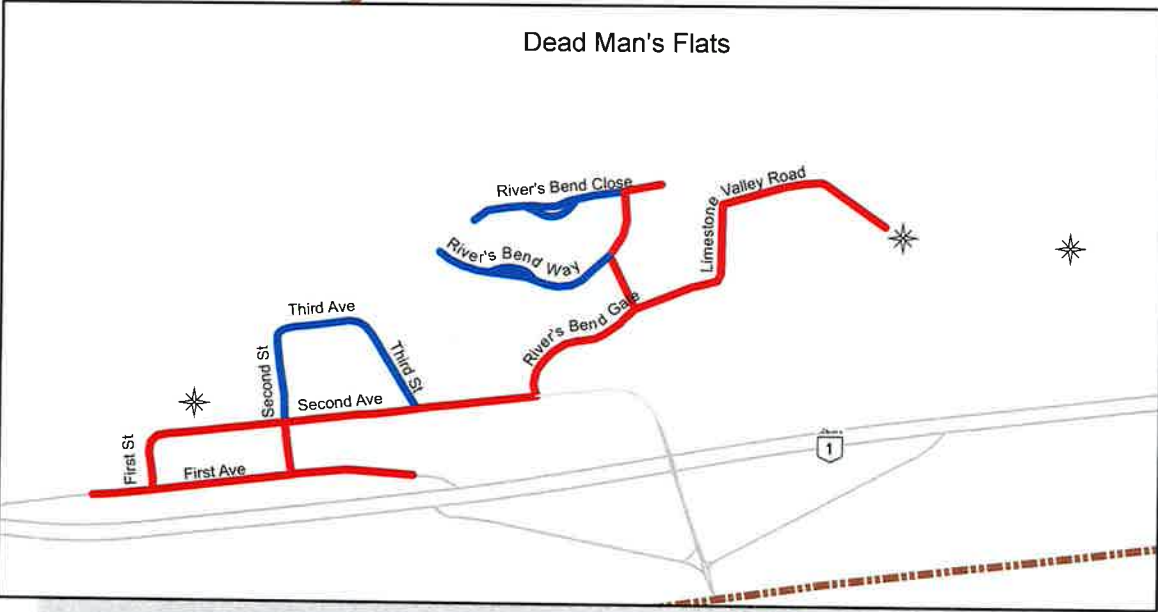
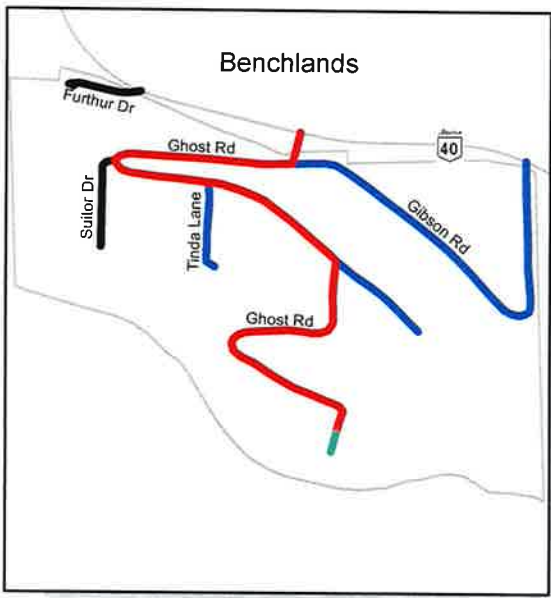
Rescinds Policy No.

*** - Denotes change Motion No.**

Attachments:

Schedule "A": Snow and Ice Control Map

Schedule 'A' Policy T-19 Snow and Ice Control Map



- Priority 1
- Priority 2
- Priority 3
- Priority 4
- Priority 5

✱ Snow Storage Facility



Bob L...
Director of Operations

[Signature]
C.A.O.

[Signature]
Reeve

February 27, 2019
Date

This map is produced by the MD of Bighorn and may not be reproduced, in whole or in part, in any form or by any means without written permission of the MD of Bighorn. The MD of Bighorn makes no warranty of representation as to the completeness or accuracy of map. February 2019.