

**MUNICIPAL DISTRICT OF BIGHORN NO. 8**

**COPY**

**BYLAW #03/13**

A BYLAW FOR THE PURPOSE OF CLERICAL REVISION TO THE MUNICIPAL DEVELOPMENT PLAN, BYLAW 05/12, IN ACCORDANCE WITH THE MUNICIPAL GOVERNMENT ACT, CHAPTER M-26, REVISED STATUTES OF ALBERTA 2000, AS AMENDED

**WHEREAS** the Municipal District of Bighorn No. 8 adopted the Municipal Development Plan, Bylaw No. 05/12;

**AND WHEREAS** Bylaw 05/12 was adopted with a mapping error regarding the future land use classifications of NE-18-24-9-W5M and SE-19-24-9-W5M on Figure 1 which were reversed;

**NOW THEREFORE**, the Municipal Council of the Corporation of the Municipal District of Bighorn No. 8 in the Province of Alberta, duly assembled in Council, enacts as follows:

1. Bylaw 05/12 is amended by replacement of Figure 1 Bighorn Bow Corridor Area Future Land Use Map with the attached Schedule A showing:
  - a. NE-18-24-9-W5M being Rural Conservation; and
  - b. SE-19-24-9-W5M being Natural and Protected Areas.

READ A FIRST TIME THIS 12th DAY OF FEBRUARY, 2013.

READ A SECOND TIME THIS 12th DAY OF FEBRUARY, 2013.

READ A THIRD TIME THIS 12th DAY OF FEBRUARY, 2013.

  
\_\_\_\_\_  
Reeve

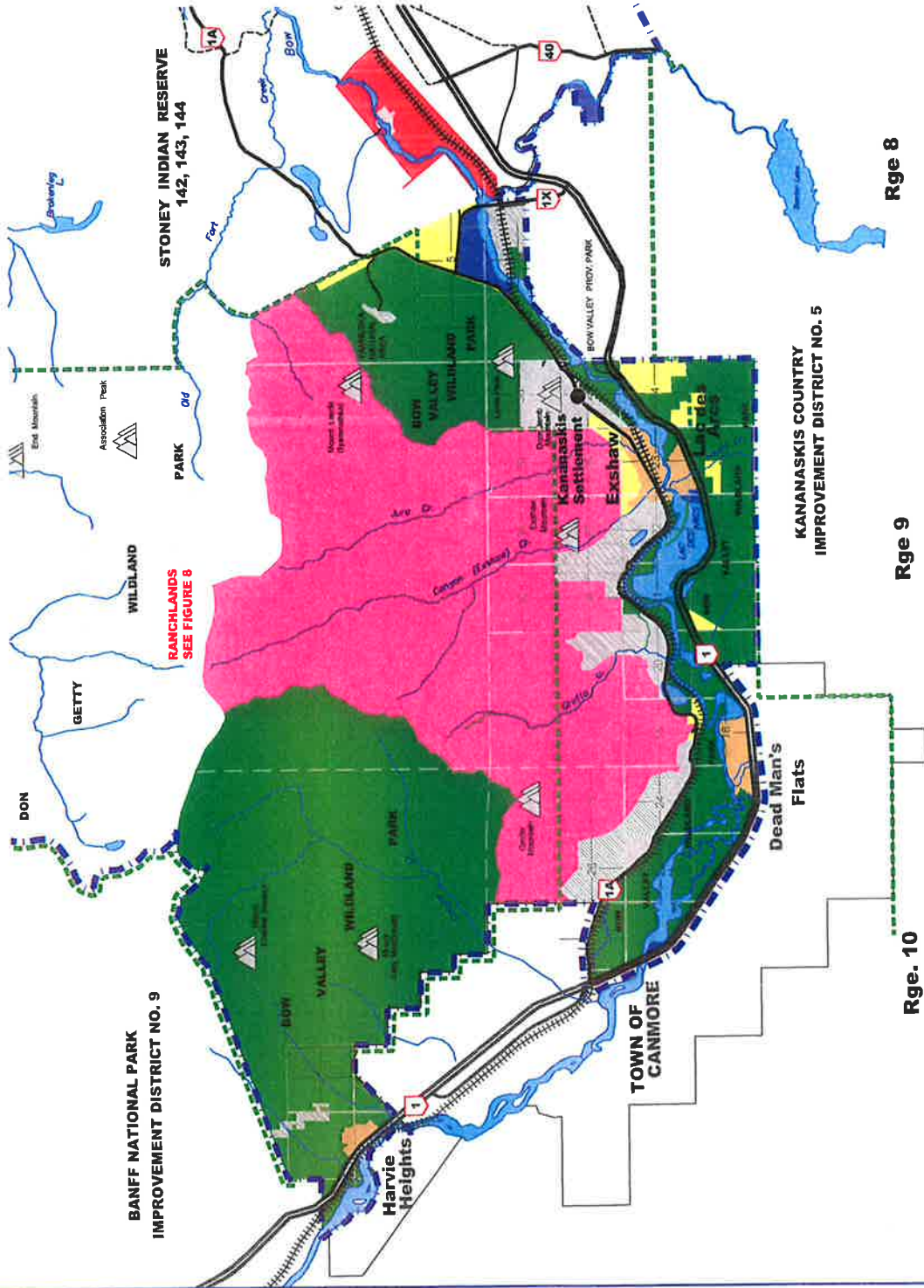
  
\_\_\_\_\_  
Executive Secretary



**MUNICIPAL DISTRICT OF BIGHORN NO. 8**  
**MUNICIPAL DEVELOPMENT PLAN**  
**FIGURE 1**  
**BIGHORN BOW CORRIDOR AREA**  
**FUTURE LAND USE MAP**



- RURAL CONSERVATION
- NATURAL AND PROTECTED AREAS
- HAMLET
- TOURISM/ RECREATION
- RURAL INDUSTRIAL
- FUTURE RESOURCE DEVELOPMENT
- HORSESHOE LANDS PLANNING AREA
- MINERAL EXTRACTION
- FOREST RESERVE BOUNDARY
- M.D. BOUNDARY



Rge 8

Rge 9

Rge. 10

Note that these concepts are not the same as the land use designations established in the Land Use Bylaw. The Municipal Development Plan is only one in a series of planning documents.



REVISIONS	
Bylaw 03/13	Client

**COPY**

COPYRIGHT: Municipal District of Bighorn No. 8. All rights reserved. Not to be copied in whole or in part. January 2013

BASE MAP PROVIDED BY ALTAUS

The Municipal District of Bighorn No. 8 provides this information in good faith but provides no warranty nor accepts any liability arising from or in connection with inaccuracy, incompleteness or misleading information or its employee's use.

ALTAUS No.

CHALLENGER GEOMATICS LTD.

CHALLENGER GEOMATICS LTD. 305, 8500 17th Ave SE, Calgary, AB T2C 0A7. www.challenger-geomatics.com. info@challenger-geomatics.com

*[Handwritten signature]*