

MUNICIPAL DISTRICT OF BIGHORN NO. 8

BYLAW 14/13

A BYLAW FOR THE PURPOSE OF AMENDING THE MUNICIPAL DEVELOPMENT PLAN, BYLAW 05/12, IN ACCORDANCE WITH THE MUNICIPAL GOVERNMENT ACT, CHAPTER M-26, REVISED STATUTES OF ALBERTA 2000, AS AMENDED

WHEREAS the Municipal District of Bighorn No. 8 adopted the Municipal Development Plan, Bylaw No. 05/12;

AND WHEREAS the Municipal District of Bighorn No. 8 annexed land from Rocky View County, authorized by Order in Council 235/13, and containing 27 ha (67 acres) more or less are now included in the boundaries of the Municipal District of Bighorn No. 8;

AND WHEREAS the Council has deems it necessary to amend Municipal Development Plan Bylaw No. 05/12 in order to bring the annexed lands under the jurisdiction of the Municipal District of Bighorn and conformity with the statutory plan;

NOW THEREFORE, the Council of the Corporation of the Municipal District of Bighorn No. 8 in the Province of Alberta, duly assembled in Council, enacts as follows:

1. The Municipal Development Plan Bylaw No. 05/12 is amended by the replacement of Figure 2 Ranchlands Area Future Land Use Map with the attached Schedule A that shows that portion of NW 7-25-5-W5M lying West of Road Plan 5619JK and SW 18-25-5-W5M lying West of Road Plan 5619JK being Rural Conservation.

READ A FIRST TIME THIS 6th DAY OF NOVEMBER, 2013.

READ A SECOND TIME THIS 11th DAY OF FEBRUARY, 2014.

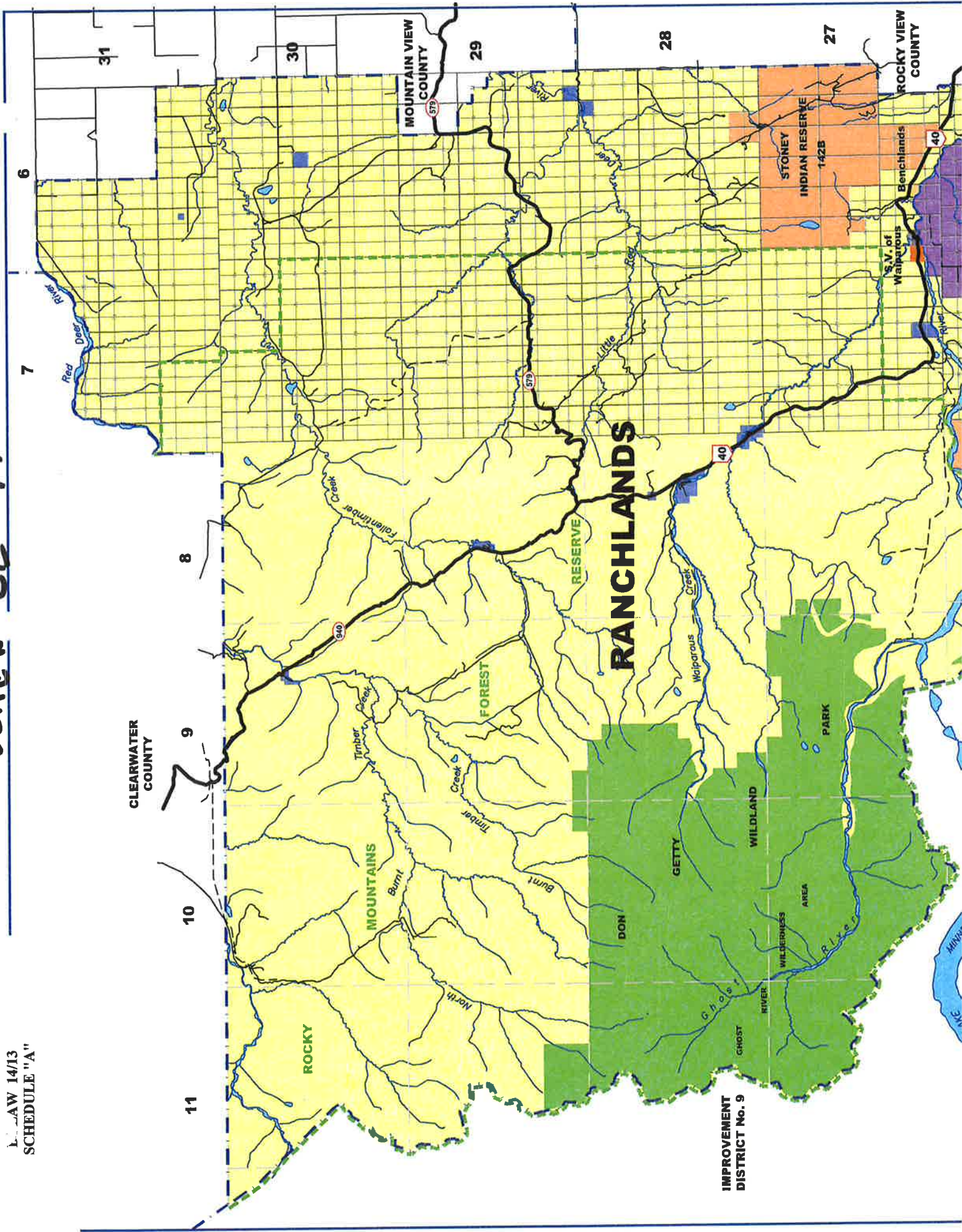
READ A THIRD TIME THIS 11th DAY OF FEBRUARY, 2014.

Reeve

Executive Secretary

SCHEDULE 'A'

LAW 14/13
SCHEDULE "A"



IMPROVEMENT
DISTRICT No. 9