

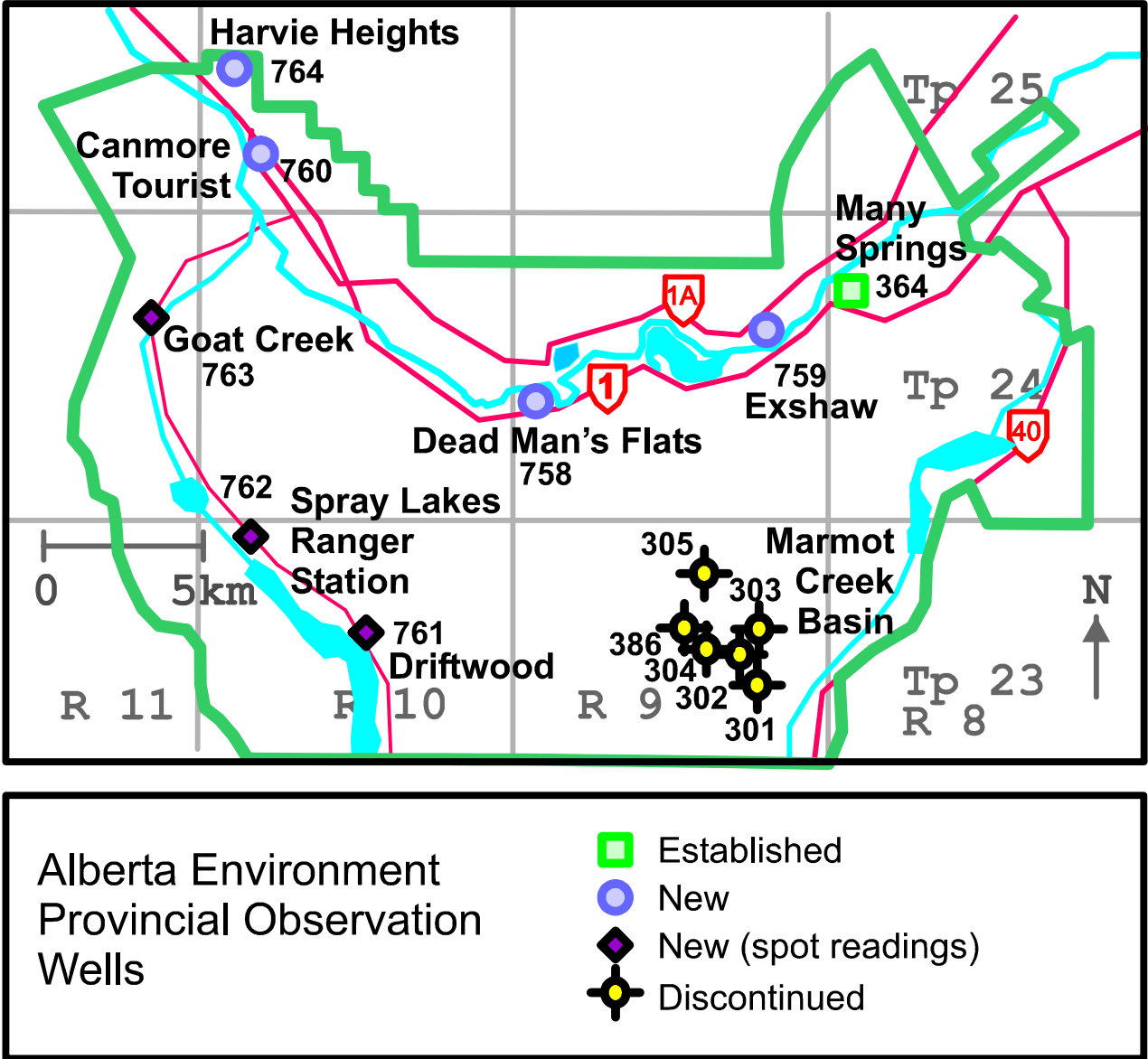
Appendix F

Alberta Environment Provincial Observation Wells

Observation Well Location Map
Table of Observation Wells

Alberta Environment Provincial Observation Well Network

Canmore Corridor and Northwestern Kananaskis Country



Alberta Environment Provincial Observation Wells in the Canmore Corridor and Northwestern Kananaskis Country

ID no.	Name	Location	Record Start Date	Record End Date	Elevation (m)	Completion Depth (m)
301	Marmot Creek Basin S5250	14-11-23-9W5	11-Oct-1964	23-Jul-1997	1601.4	6.5-8.5
302	Marmot Creek Basin S5430	3-14-23-9W5	11-Oct-1964	1-Dec-1986	1642.0	8.04-9.14
303	Marmot Creek Basin N5475	6-15-23-9W5	9-Jul-1965	23-Jul-1997	1669.1	34.0-36.58
304	Marmot Creek Basin S6170	6-15-23-9W5	12-Jul-1965	22-Nov-1986	1870.0	12.0-14.33
305	Marmot Creek Basin N6770	11-22-23-9W5	14-Jul-1965	16-Jul-1996	2151.62	9.0-11.58
386	Marmot Creek Basin 2507E	6-15-23-9W5	30-Apr-1989	23-Jul-1997	1640.00	0-12.8
364	Many Springs	4-30-24-8W5	23-Jan-1987	current	1370	21.94-29.56
758	Dead Man's Flats	4-18-24-9W5	5-Nov-1999	current	1296.33	163.7-194.2
759	Exshaw	4-23-24-9W5	26-Oct-2000	current	1290.37	195.1-201.2
760	Canmore Tourist Info	13-5-25-10W5	3-May-2001	current	1315.35	59.44-62.48
761	Driftwood	4-28-23-10W5	5-Oct-2000	current	1704.5	17-68-21.34
762	Spray Lakes Ranger Station	1-31-23-10W5	5-Oct-2000	current	1688.29	29.26-32.00
763	Goat Creek	13-24-24-11W5	5-Oct-2000	current	1663.29	52.73-60.96
764	Harvie Heights	2-18-25-10W5	Jul 2002	current	1376.5	35.58-48.77

Updated charts of water levels are available from:

Alberta Environment
Environmental Monitoring and Evaluation
Oxbridge Place
9820-106 Street
Edmonton, Alberta
T5K 2J6